

Passport 6400 Multiservice Enterprise Switch



Overview

Building separate networks for ATM, voice, video and data is costly and inefficient. Nortel Networks Passport 6400 are scalable multi-service solutions that allow integration of LAN/WAN services into a single easily managed solution over leased lines, public/private frame relay or ATM. Nortel Networks Passport 6400 multi-service solutions consolidate diverse networks over a common platform, providing cost savings, operational simplicity and QoS optimised network infrastructure.

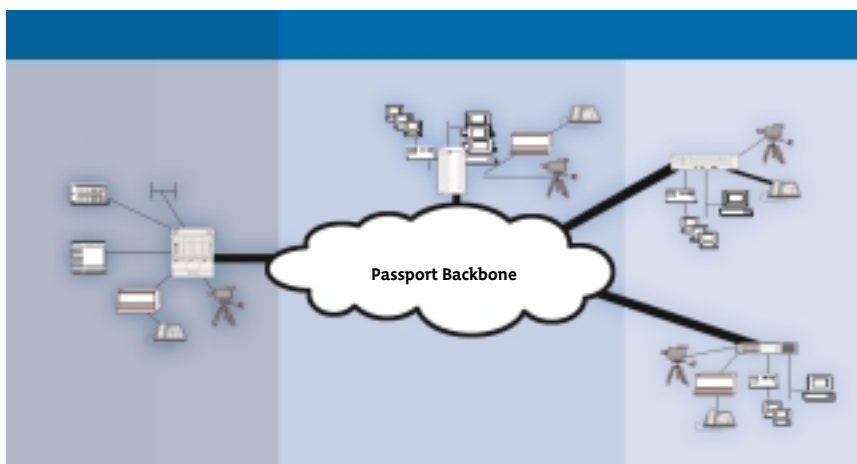
Customer Profile

The Passport 6400 multi-service solution is designed for Enterprise customers who are looking for network consolidation on voice, video, LAN and data traffic in a common network infrastructure. It provides a very scalable platform to support - from several nodes up to 1000 nodes. It provides excellent solutions for Enterprise sectors such as Finance, Government, Utilities and Call Centres.

Typical Applications

The Passport 6400 series supports all common applications that are required in the Enterprise customer environment. Typical applications include:

- Backbone solution for branch access (eg Passport 4400)
- Voice/fax networking for PBX
- LAN services (bridging, IP, IPX)
- Provide layer 2 connectivity (eg ATM, FR) for existing data equipment/network
- Video conferencing
- IBM services (APPN & SNA) or legacy data (X.25, Async)



Key Points

- **Bandwidth Savings** – achieve bandwidth savings through dynamic bandwidth allocation, voice (8K) and data compression, silence suppression, fax demodulation and optimised LAN access protocols
- **QoS Optimisation** – Passport supports Multiple Priority System (MPS) to allow dynamic traffic management based on application characteristic and QoS priorities
- **Branch Office Consolidation** – Passport 6400 provides consolidation for ATM, voice, fax, video, LAN, SNA and data services across a single network link
- **Scalability** – Passport 6400 can support thousands of nodes
- **Low Cost of Operations** – Passport 6400 supports switched virtual circuits, avoiding a large number of provisioned connections and dynamically providing the best available traffic path.

Key Features and Benefits

PP6400	Key Features	Benefits
System Networking	Redundancy	Redundancy available at CP, FP, system bus, Fan Unit & Power supply to avoid single point failure
	Multiple Priority System	Allocates bandwidth dynamically, reducing traffic congestion and delivering the least possible network latency, guaranteeing service level for all traffic
	Virtual Network Switching	Provides flexible cell and frame transport and improves LAN/WAN inter-working performance for IP and IPX routed traffic as well as bridged traffic
	M-PANL Networking with PP4400	Inter-working with PP4400 for both data and voice services.
ATM	SVC/PNNI/IISP Support	Provides ease of configuration and management with reduced latency for voice and improved connectivity for LAN traffic
	Next Generation ATM IP module	Dedicated ASIC to optimise IP performance over ATM
Frame Relay	RFC 1490 WAN PVC over Frame Relay protocol	Provides seamless inter-working between Passport 6400 and routers
	QoS-enabled for Frame Relay service	Support QoS prioritisation(TP) for FR circuits over PP network
Voice	Toll-quality Voice (Clearvoice)	Support single-hop SVC for voice connection to deliver toll-quality voice at G.729
	FAX Demodulation	Efficient consolidation of fax with other services reduces communication costs. Transmits faxes with only 9.6/14.4 Kbps instead of 64 Kbps
	A-law and Mu-law conversion	Inherently provides signalling conversion and avoids the need for external signalling equipment

Key Features and Benefits continued...

	Echo Cancellation	On-board echo cancellation with 64ms tail delay delivers superior voice quality and eliminates the need for external devices
LAN	Routing Support: RIP, RIPv2, OSPF, BGP-4, EGP	Provides flexibility in building IP networks
	NetSentry	Provides advanced IP packet filtering
	Virtual Router Redundancy Protocol	Eliminates a single point of failure inherent in the static default router environment

Ordering Information

For further information, please contact your local Nortel Networks Representative.